

Fact sheet

2011



Profile

- Private company, founded in 2009
 - Focused on mineral resource exploration and development in Africa
 - Building a diverse portfolio of projects with multiple uplift characteristics:
 - first-mover advantage - early entry
 - cluster strategy - build critical mass
 - substantial upgrade potential - optimise resource definition
 - Looking to develop these assets in order to maximise and realise true value
 - Partner-friendly, concentrates on under-developed and under-explored regions in Africa
- Highly mobile team of specialists with long-term experience in:
 - geology, politics, diplomacy, business culture and languages across the African continent
 - identifying opportunities and evaluating asset potential - key strength
 - The company has interests in Tanzania, Ethiopia, DRC, Burkina Faso, and Gabon
 - Currently the focus is on gold, copper and iron ore, although Benzu is also pursuing interests in a range of other commodities, including manganese, in countries across the continent



Benzu Resources map

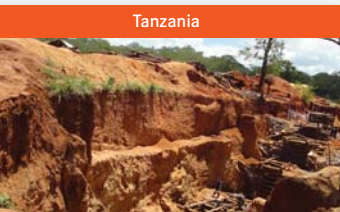
Tanzania - gold

Ethiopia - gold

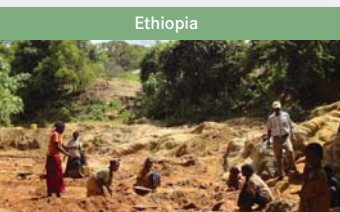
DRC - copper

Burkina Faso - gold

Gabon - iron ore



Tanzania



Ethiopia



DRC

Current projects

Tanzania

Benzu has an interest in Benzu Gold Limited (www.benzugold.com) which holds a 92% stake in two tenements in the Handeni gold district, a known gold-bearing belt where extensive exploration is under way.

Ethiopia

Benzu is currently pursuing gold investments in Ethiopia through its subsidiary, Aurigin Resources Limited, which has secured key tenements in the under-explored gold belts of southern and western Ethiopia.

DRC

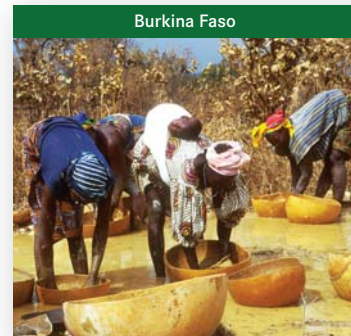
Despite the complex business environment, and thanks to Benzu's expertise and experience, several key copper tenements have been secured in an area identified for its high geological potential in the Tenke-Fungurume terrain of Katanga.

Burkina Faso

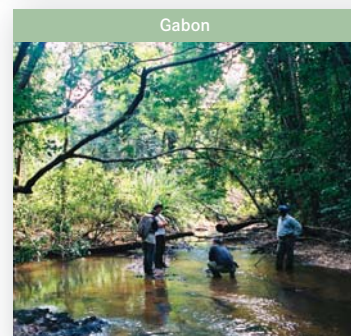
Benzu's expertise and contacts in Burkina Faso have enabled the company to evaluate gold opportunities with the objective of securing high-potential properties.

Gabon

Benzu has lodged prospecting applications over three areas identified for their iron ore and gold potential.



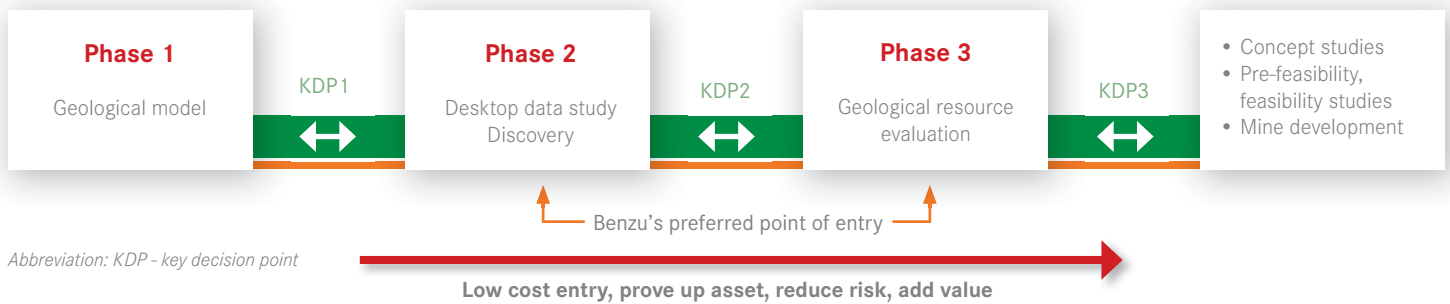
Burkina Faso



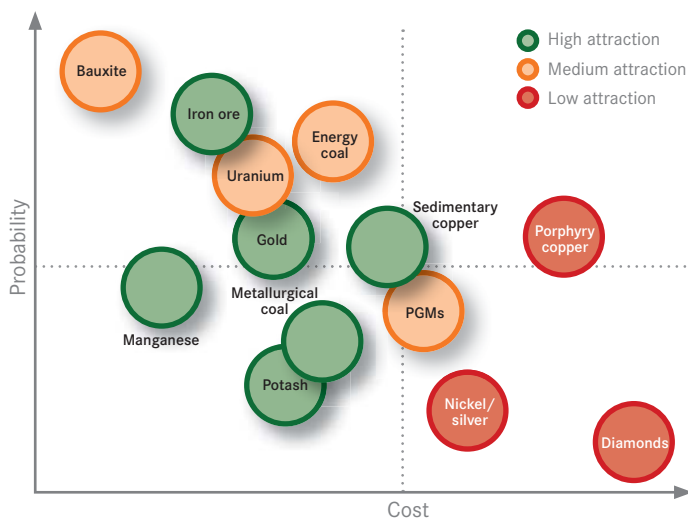
Gabon

Strategy

Exploration pipeline



Exploration focus: high probability, low cost



Strategy

Benzu's strategy is to pursue and develop:

- known mineral deposits with strong resource estimates which can be upgraded and developed;
- identified but as yet undeveloped deposits where data exists but which are below the resource thresholds for larger mining houses;
- greenfield assets where desktop studies indicate the presence of material resource deposits in known geological areas; and
- going concerns where appropriate.

Benzu's team

Adonis Pouroulis *Chairman* (41)

Mining engineer; founder and Chairman of AIM-listed Petra Diamonds; founder and Non-executive Chairman of Chariot Oil & Gas; founder of Chromex Mining and Mukuba Resources; additional investment interests in other commodities across Africa.

Ben Smit *Chief Executive Officer* (50)

Entrepreneur; project manager; extensive experience in project management in Africa; former General Manager for Petra Diamonds in Angola; fluent in English, Portuguese and Afrikaans.

Cesare Morelli *Technical Director* (48)

Geologist; 18 years in exploration with De Beers,

mainly in west and central Africa; four years with BHP Billiton as Regional Exploration Manager for Africa. Fluent in Italian, French and English.

Paul Nelson *Chief Financial Officer* (37)

Chartered accountant; previously with the South African Revenue Service and then ran his own, successful auditing practice. Subsequently active in the development of various African resource ventures.

Dr Salif Napon *Chief Geologist* (51)

PhD in geology; previously with Burkina Faso geological survey, exploration juniors in Burkina Faso, Anglo American Corporation in gold and base metals exploration in west Africa and copper-cobalt in DRC, and BHP Billiton in iron ore projects in Guinea and Liberia and copper exploration in DRC.

Greg Murphy *Executive Director* (50)

Over 25 years' international investment industry experience in Toronto, London and New York; CEO of Lakeshore Capital group of companies; former head of equity derivatives at Midland Walwyn/Merrill Lynch Canada; previously SVP equity derivatives at First Marathon and Gordon Capital.

Dr Medard Mungiya Kubanza

Chief Geophysicist (44)

PhD in geophysics from University of Tohoku, Japan; geoscientist and seismic and electrical imaging specialist; over 10 years' experience in both academic research and exploration geophysics with assignments and proven abilities in Africa, Japan and Canada; speaks French, English and Japanese.

Contact details

London Representative Office: 36 Dover Street, London, W1S 4NH • Tel: +44 207 355 0465 • Fax: +44 207 409 2169

Registered Office: Trafalgar Court, Admiral Park, St Peter Port, Guernsey, GY1 3EL • Tel: +44 1481 729466 • Fax: +44 1481 729499

Email: info@benzuresources.com

Disclaimer

All statements in this fact sheet, other than historical facts, that address exploration activities and mining potential are forward-looking statements. Although Benzu Resources believes the expectations expressed in such forward-looking statements are based on reasonable assumptions, such statements should not in any way be construed as guarantees of future performance. Factors that could cause developments to differ materially from those expressed include actual exploration results, technical analysis and prevailing capital market conditions. The company is subject to specific risks inherent in the exploration and mining business and general economic and business conditions. Times and dates in this fact sheet may be changed, depending on market conditions and other relevant developments.